

WHAT'S IN THE BOX?

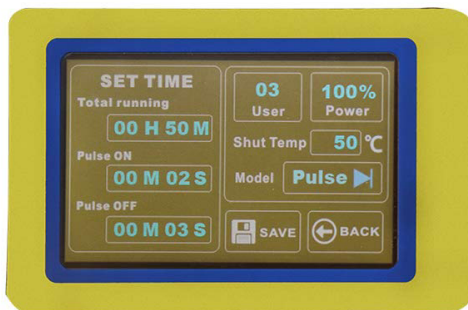


1. Ultrasound host
2. Ultrasonic probe
3. Power cord
4. Lifting platform,
anti-skid cushion
5. Cable line
6. Temperature probe
- 7. Bonus 3mm probe**



ONE MACHINE FOR **10** RESEARCHER

--Learn the panel from one picture



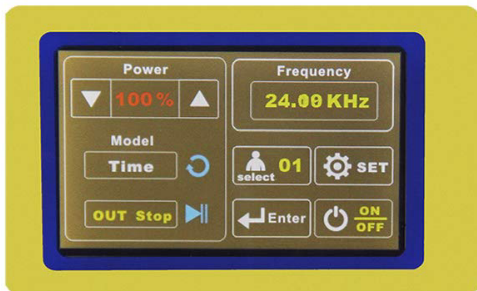
USER: 03

Power: 100%

Total Running Time: 50 minutes

Pulse mode: run for 2 seconds,
stop for 3 seconds

Over-temperature protection: stop the
ultrasound when the temp exceeds 50°C

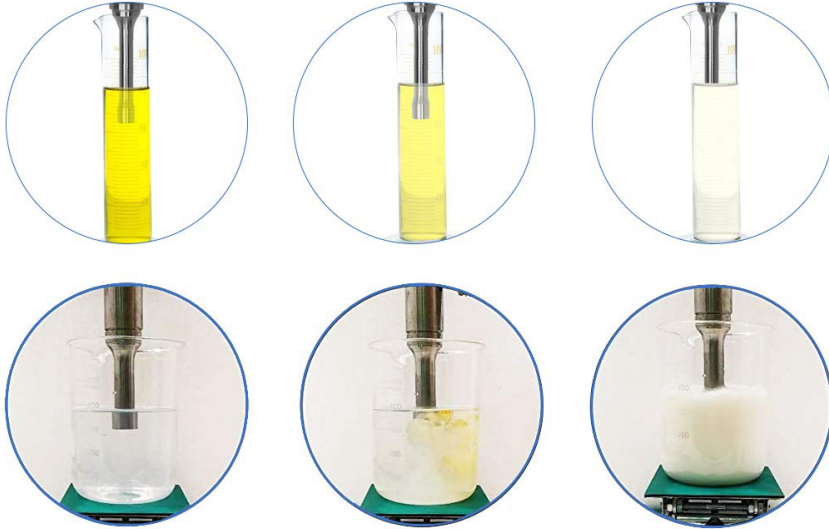


POWER AND FREQUENCY

-Power setting: 1% increment,
more precise control

-Display the frequency 24KHZ(19-26khz Auto-
matic Frequency Scanning and Checking)

EMULSIFICATION



Before

After

! The probe only needs to be 1-2 cm into the solution. Excessive depth can cause machine failure.

Common Applications, not limited to this



| | | | |
|---------------------------------|----------------------------------------------|-----------------------|-----------------------------------|
| <p>Oil-water Emulsification</p> | <p>Homogenization of Composite Materials</p> | <p>Soil Detection</p> | <p>Carbon Nanotube Dispersion</p> |
|---------------------------------|----------------------------------------------|-----------------------|-----------------------------------|